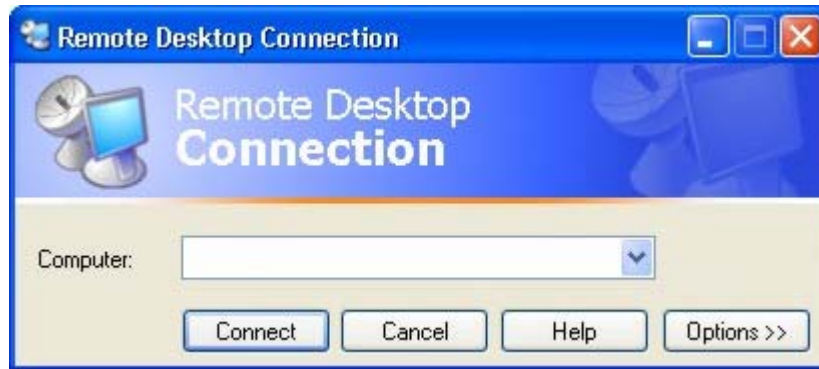




SYSTEMS ENGINEERS & TECHNOLOGIES

How can I use Remote Desktop Connection?

1. On your home computer, click **Start**, point to **All Programs**, and then point to **Accessories**.
2. In the **Accessories** menu, point to **Communications**, and then click **Remote Desktop Connection**.



3. In the **Computer** box, type the your host computer IP Address (ask your Network Administrator).
4. Click **Connect**.



5. When the **Log On to Windows** dialog box appears, type your user name, password, and then click **OK**.

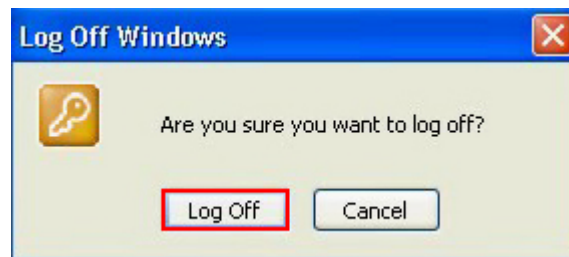


SYSTEMS ENGINEERS & TECHNOLOGIES

The Remote Desktop window opens, and you see the desktop settings, files, and programs that are on your work computer. Your host computer remains locked, and nobody can access it without a password. In addition, no one will be able to see the work you are doing remotely.

How can I close my Remote Desktop Session?

1. Click **Start**, and then click **Log Off** at the bottom of the **Start menu**.



2. When prompted, click **Log Off**.