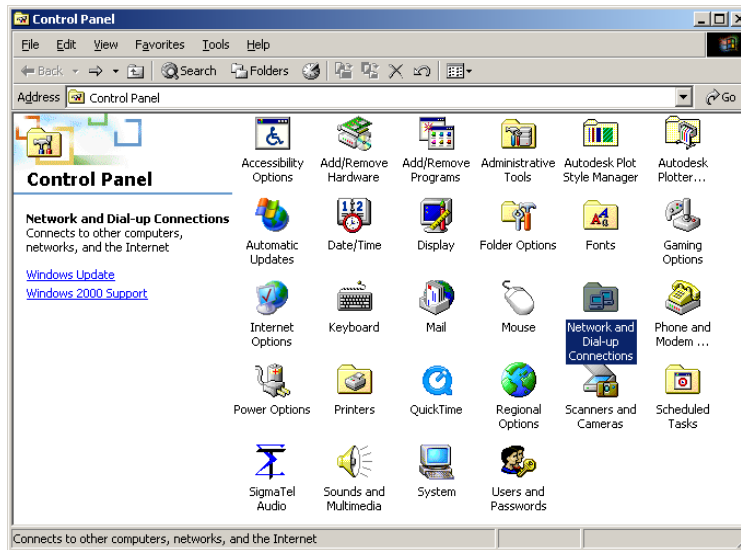




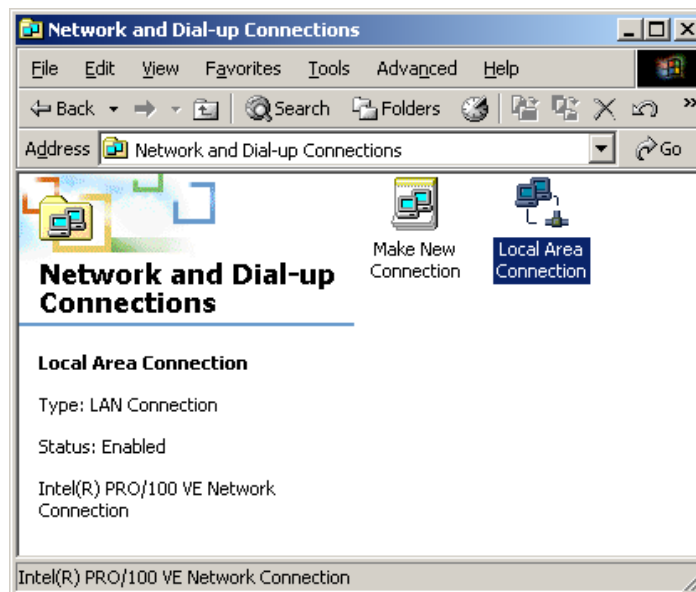
SYSTEMS ENGINEERS & TECHNOLOGIES

How can I change my IP Address?

1. Go to Start, Settings, Control Panel.

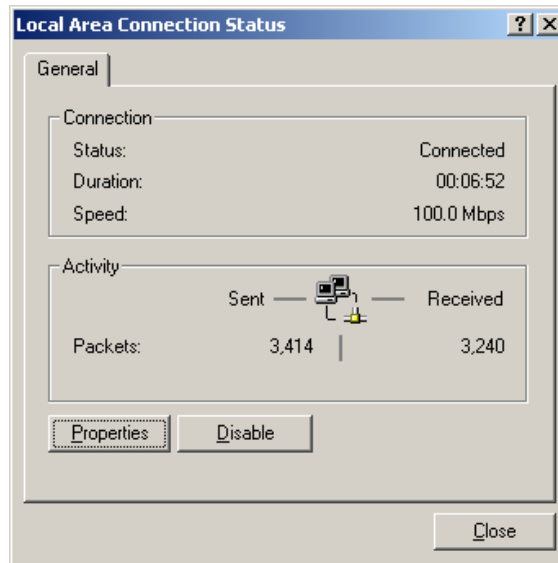


2. Double click over Network and Dial-up Connections.
3. Double click over your Local Area Connection.

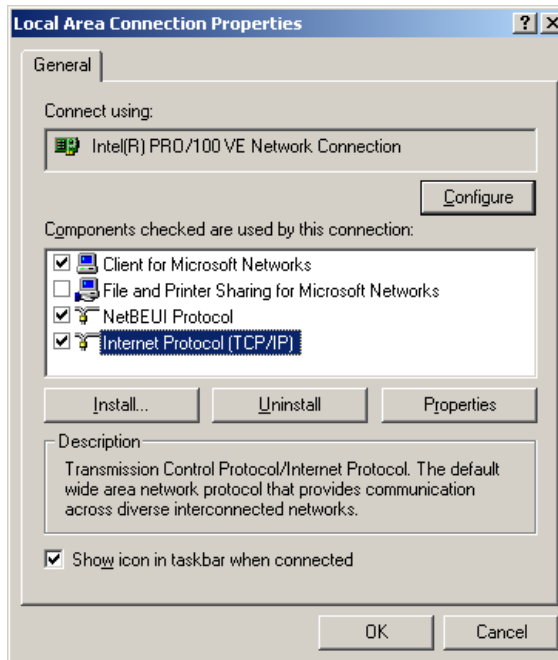




SYSTEMS ENGINEERS & TECHNOLOGIES

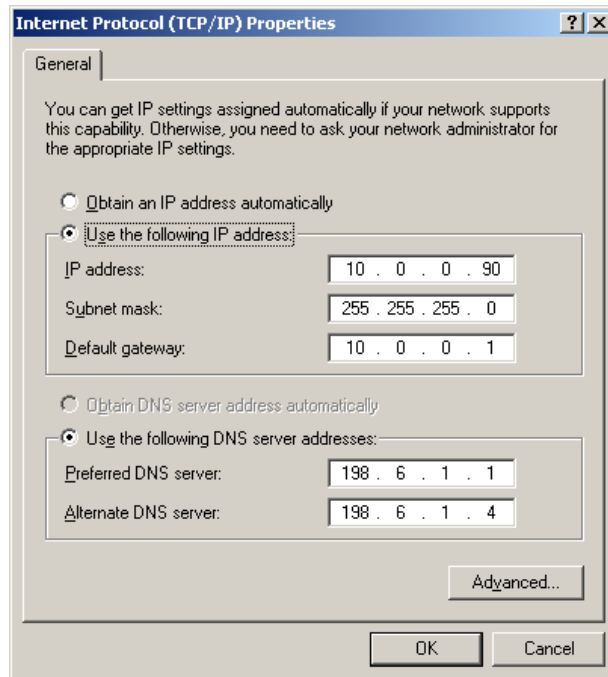


4. Click over Properties.
5. Click over Internet Protocol (TCP/IP) follow by a click over Properties.





SYSTEMS ENGINEERS & TECHNOLOGIES



6. Finally, Change the addresses according with the information received from your Network Administrator.
7. Click Ok to save.